

CONTEMPO

by CRESTWOOD

Redefining contemporary cabinetry design





CONTEMPO

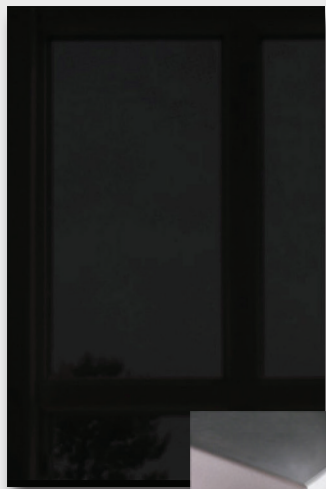
by CRESTWOOD

For over 50 years Crestwood has been a leader in the kitchen and bath industry and we continue to push forward with the same passion in our Contempo line of cabinetry.

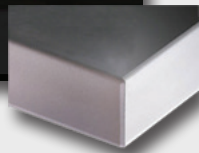
Contempo is a curated collection of over 130 standard colors that is designed for the ever growing contemporary marketplace. With high gloss, textured and matte material selections, Contempo is the most complete contemporary line of cabinetry in the market.

Contempo's vast selection of contemporary materials offers many distinctive looks to choose from as well as price points that will fit all budgets. When paired with our Simplicity line's contemporary selections such as veneers, the possibilities are endless.

DOOR STYLES



AUGUSTA
aluminum pvc
edgeband



AURORA
matching
edgeband





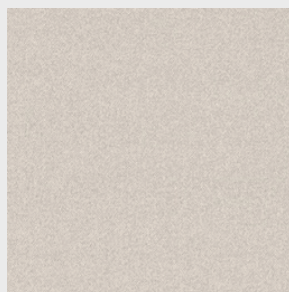
FINSA DUO COLLECTION

Finsa Duo is a light textured collection of thermo-structured surfaces in a selection of wood grain finishes linen patterns and soft neutral colors. All panels are antibacterial particularly suitable where hygiene is a must. Standard with vertical pattern, optional horizontal or matching vertical pattern.

Available Augusta and Aurora Door Styles



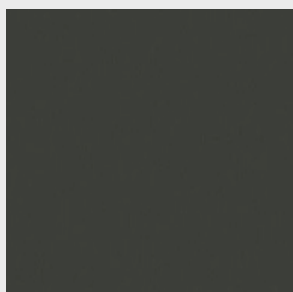
Espiga Pimienta



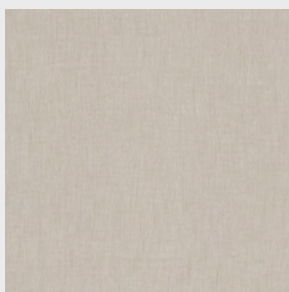
Espiga Sal



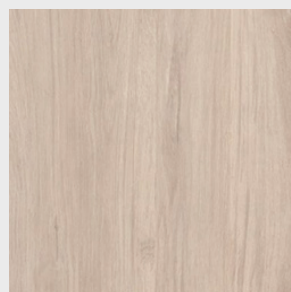
Fresno Glacial



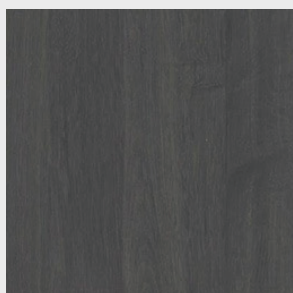
Gris Gu



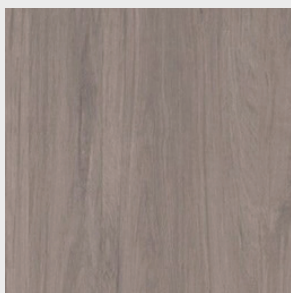
Lino Cancun



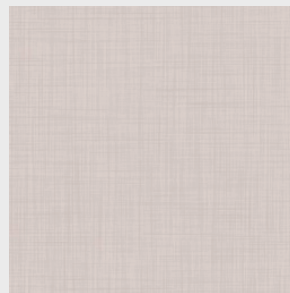
Roble Aurora



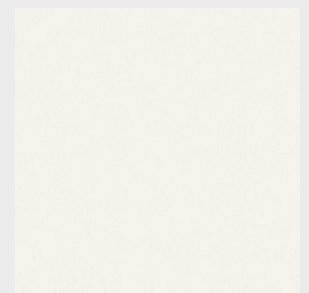
Roble Azabache



Roble Colorado



Tessuto



White (Soft 3)

FINSA STUDIO COLLECTION

Finsa Studio is a deep textured collection of thermo-structured surfaces of modern structures and designs which give cabinet doors a decorative and extraordinarily natural look. All panels are antibacterial particularly suitable where hygiene is a must. Standard with vertical pattern, optional horizontal or matching vertical pattern.

Available Augusta and Aurora Door Styles



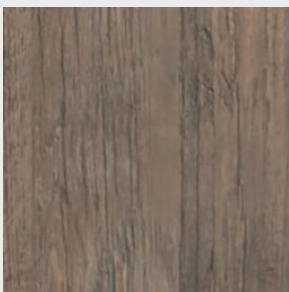
Fresno Plata



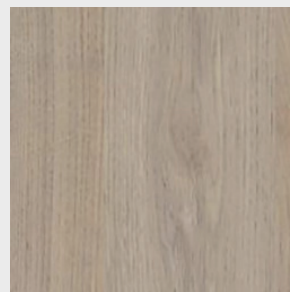
Fresno Rosario



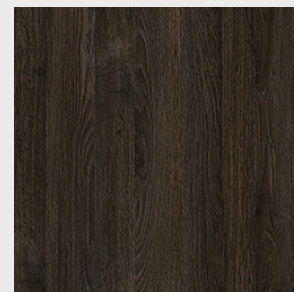
Pino Sacramento



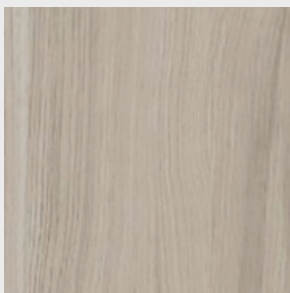
Pino Valkiria



Roble Alabama



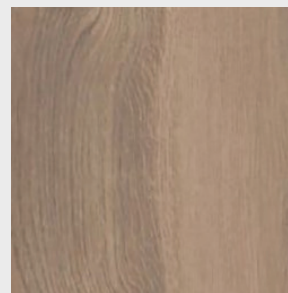
Roble Chicago



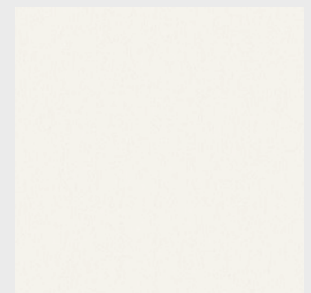
Roble Dallas



Roble Memphis



Roble Niagara



White SR209

NATURE + COLLECTION

Engineered panels clad in a thermo-structured surface that replicates both the look and feel of natural wood grain, concrete, & Italian plaster in striking patterns and colors. Unique three-layer construction allows for deep embossing that no other structured surface can match. This product is not intended to be used for countertop applications.

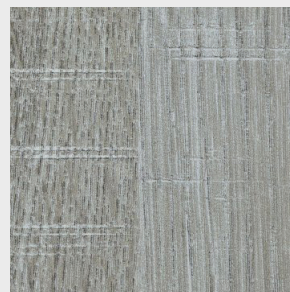
Available in Aurora and Augusta door styles.



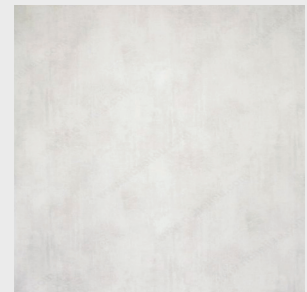
Ascari



Aspen Oak



Barn Oak



Concrete Bianco



Bianco Nature



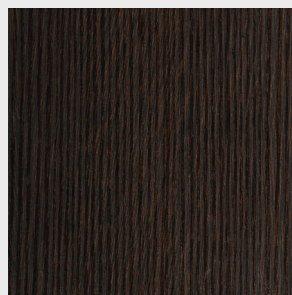
Brolio Oak



Burned



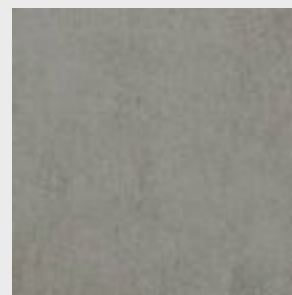
Smoky



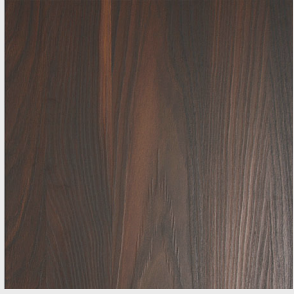
Carbone



City Oak



Concrete



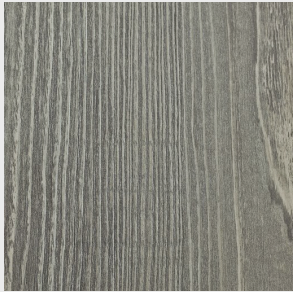
Cypress Point



Dark Concrete



Engadina



Fresh Grey



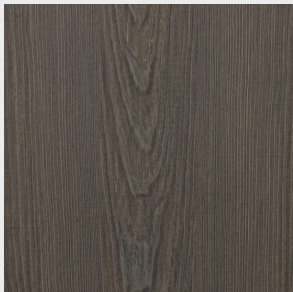
Gavi Oak



Hyde Park



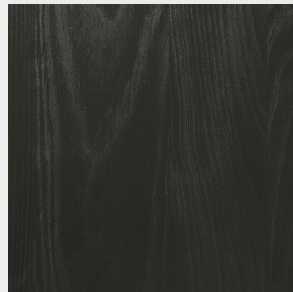
Light Carbon



Lounge Brown



Nadir



Nero Nature



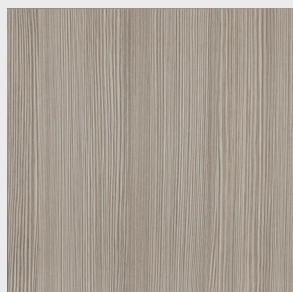
Oregon Pine



Peak District



Silver Sand



Stratos



Toasted Espresso



Tuscan Cypress



Vineyard Oak



Volterra Oak

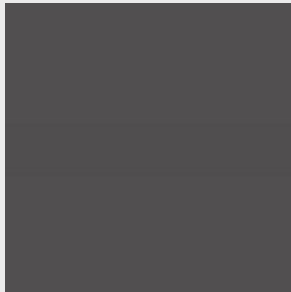


ELEGANTE COLLECTION

This collection offers lacquered acrylic panels with super gloss and Supermatte finish. In addition to its resistance to UV rays and discoloration, the Finguard technology prevents the appearance of fingerprints on our acrylic lacquer panels and matte finish laminates. All surfaces are antimicrobial.

Available Augusta, and Aurora Door Styles

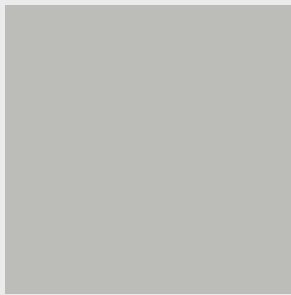
GLOSS FINISHES



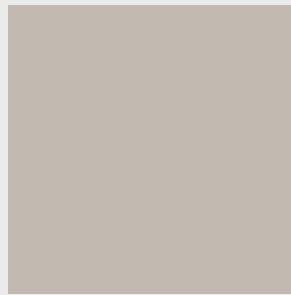
Glossy Anthracite



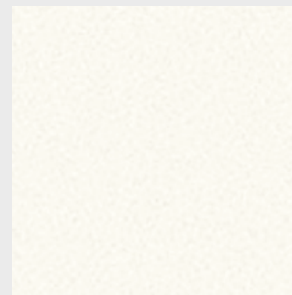
Glossy Black



Glossy Light Grey

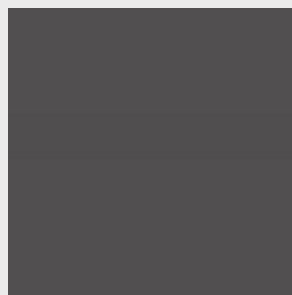


Glossy Volcanic Grey



Glossy White

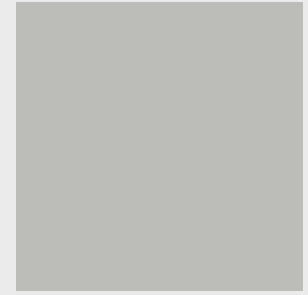
MATTE FINISHES



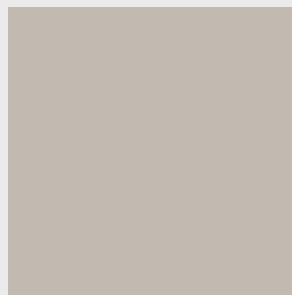
Matte Anthracite



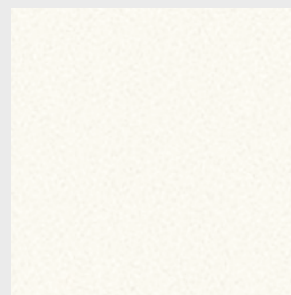
Matte Black



Matte Light Grey



Matte Volcanic Grey

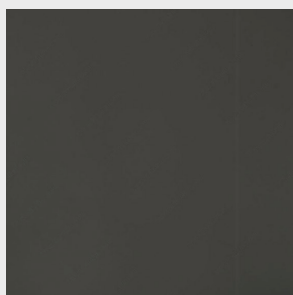


Matte White

BRILLANTE COLLECTION

The Brillanté Collection presents perfectly smooth panels using its state-of-the-art manufacturing technology. Coated with a high-gloss lacquer and dried using UV technology. Excellent heat and scratch resistance along with UV rays and discoloration resistance. Standard with vertical pattern, optional horizontal or matching vertical pattern.

Available in Augusta and Aurora Door Styles



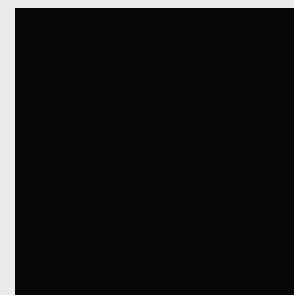
Antracita



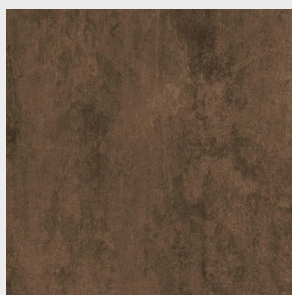
Basalto



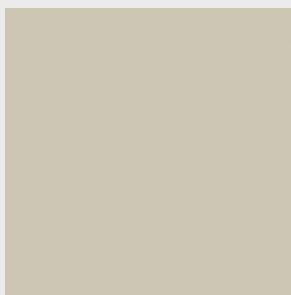
Blanco



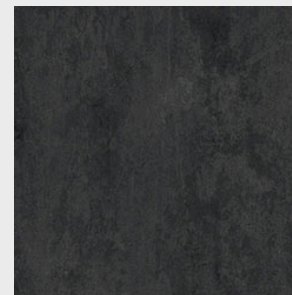
Black



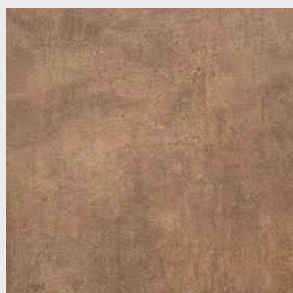
Bronce



Cashmere



Cobalto



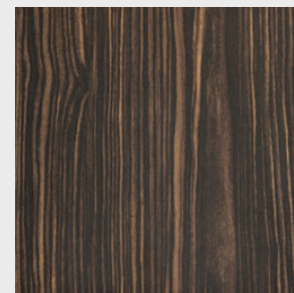
Cuzco Oro



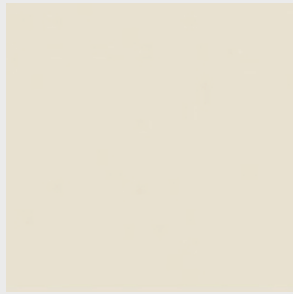
Cuzco Royal Gold



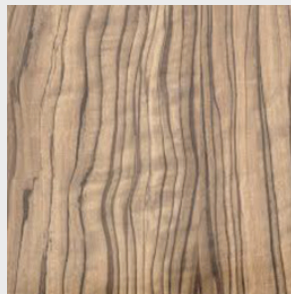
Euroline 3



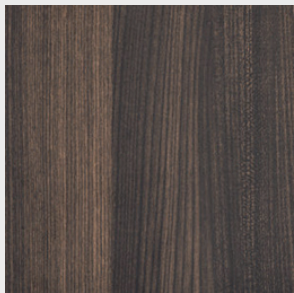
Guayana



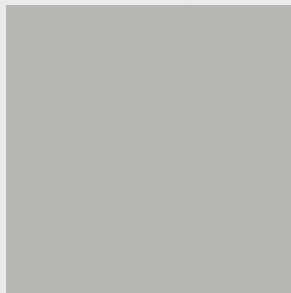
Magnolia



Olivo



Olmo



Pale Grey



Platino



Rojo



Roble Frape



Textil Graffito



Textil Plata

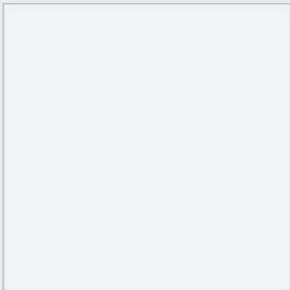


Titiano

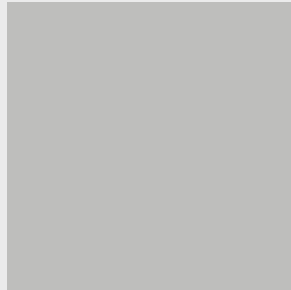
FENIX COLLECTION

FENIX NTM® is the next step forward in surface technology. An innovative, extremely matte material for vertical and horizontal applications, FENIX NTM® features nanotechnology with enhanced physical properties. These remarkable properties include thermal healing of scratches and heat & abrasion resistance.

Available in Augusta and Aurora Door Styles



Bianco Kos



Grigio Efeso



Grigio Londra



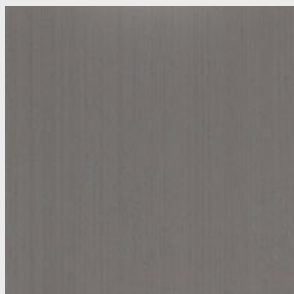
Nero Ingo



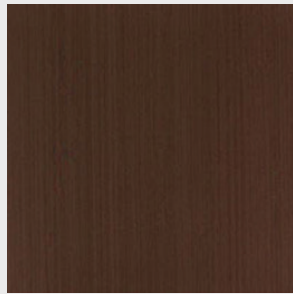
LUXE COLLECTION

High gloss Acrylic components feature an ABS (Acrylonitrile Butadiene Styrene) colored layer, which is permanently fused with a clear, ultra-high gloss acrylic top layer. ABS is an ecologically responsible, impact resistant, mechanically and thermally resilient, high quality thermoplastic. Standard with vertical pattern, optional horizontal or matching vertical pattern available.

Available in Augusta and Aurora Door Styles



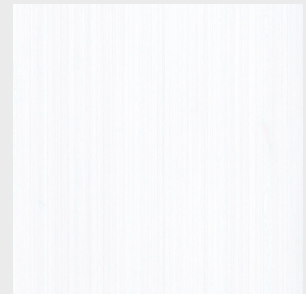
Wired Mercury



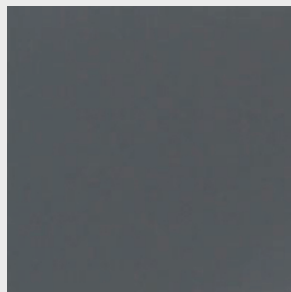
Wired Bronze



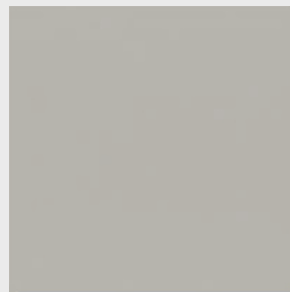
Wired Cobalt



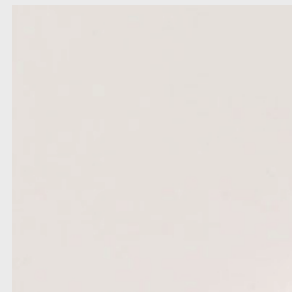
Wired White



Dark Gray Acrylic



Smoke Acrylic



White Acrylic

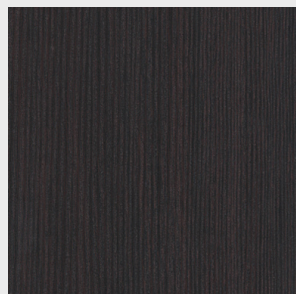


ELOGIO COLLECTION

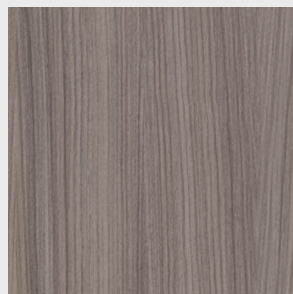
Textured thermally fused laminate (TFL) is made by fusing a resin-impregnated sheet directly to a substrate. Heat and pressure activate the resin in the saturated TFL sheet, creating a cross-linked bond with the engineered core. The embossed texture adds a natural look to your designs.

Standard with vertical pattern, optional horizontal or matching vertical pattern.

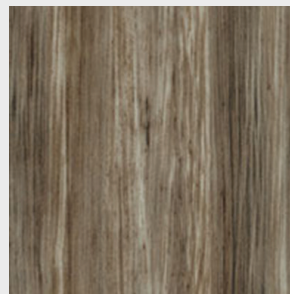
Available in Augusta and Aurora Door Styles



Dark Oak Melinga



Fisherman's Wharf



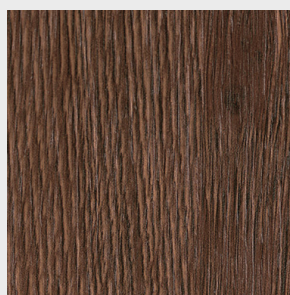
Grand Canyon



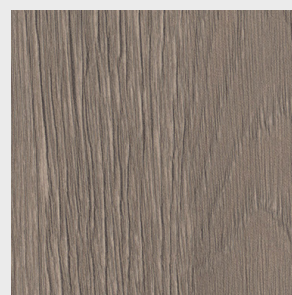
Kona



Oyster Bay



Vintage Sepia Oak

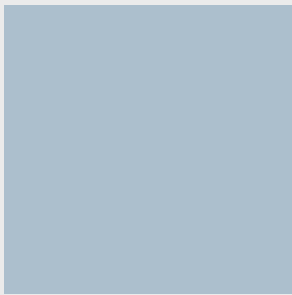


Weathered Gray Oak

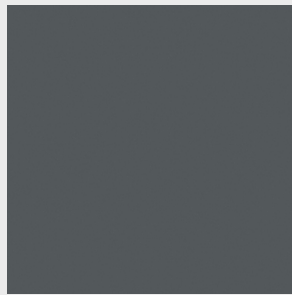
ELOGIO COLLECTION

Elogio Supermatte and Elogio Gloss are Matte and Gloss lacquered thermally fused laminate on an engineered core with anti-fingerprint, soft touch and scratch resistant properties. Standard with vertical pattern, optional horizontal or matching vertical pattern.

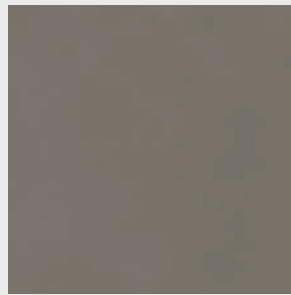
Available in Augusta and Aurora Door Styles



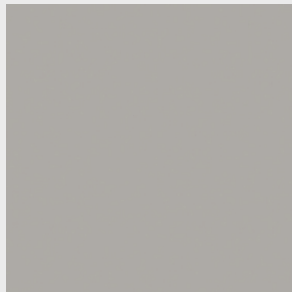
Denim SuperMatte



Flint SuperMatte



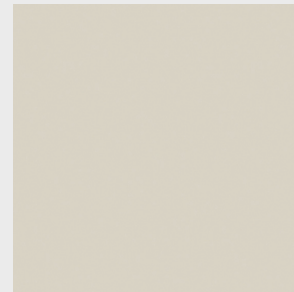
Gauntlet SuperMatte



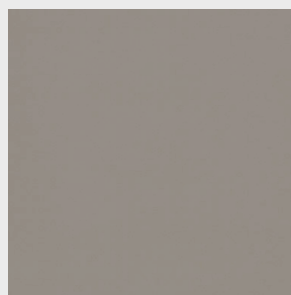
Haze SuperMatte



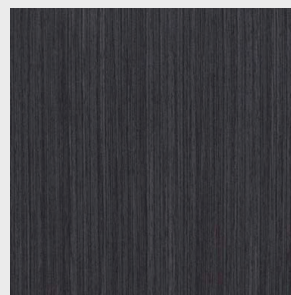
Midnight SuperMatte



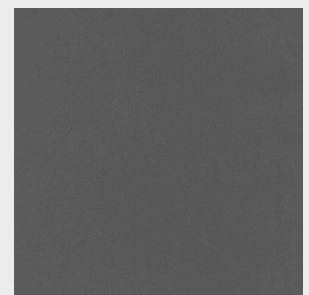
Mist SuperMatte



Silt SuperMatte



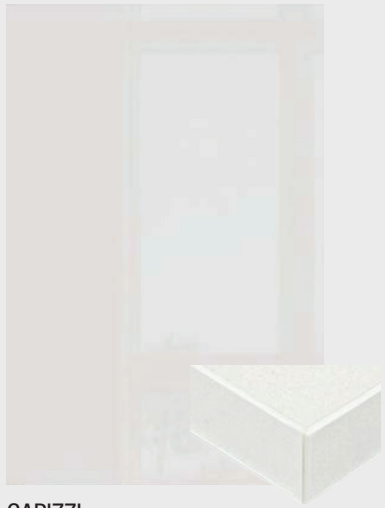
Linear Graphite Gloss



Steel Gloss



HIGH PRESSURE LAMINATE DOORS



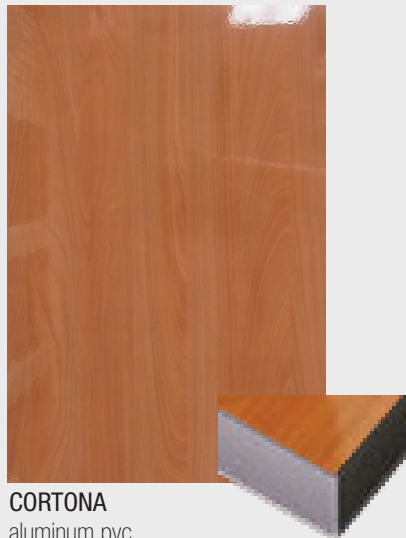
CAPIZZI
matching PVC
edgeband



CASINI
matching
edgeband



CASINI-HPL
matching HPL
edgeband



CORTONA
aluminum pvc
edgeband

CONTEMPO OFFERS HIGH PRESSURE LAMINATE DOORS IN THOUSANDS OF COLORS. WE OFFER LAMINATES FROM ABET LAMINATI, FORMICA, NEVAMAR, WILSONART TO NAME A FEW AS WELL AS LAMINATES FROM MANY OTHER COMPANIES.

CONTEMPO IS AVAILABLE IN FRAMELESS CONSTRUCTION. CONSTRUCTION IS MAPLE OR WHITE MELAMINE .75 BOX WITH AN OPTION FOR MAPLE PLYWOOD FOR SILVER MELAMINE .75 BOX.

DRAWER SLIDES ARE A FULL EXTENSION TANDEM SLIDE BY BLUM. HINGES ARE BLUM CONCEALED, SELF CLOSING. WITH OPTIONS FOR BLUM TANDEM DRAWER BOX OR BLUM LEGRA DRAWER BOX.

FOUNDED IN 1969, CRESTWOOD IS A SECOND-GENERATION FAMILY BUSINESS. THE COMPANY BEGAN AS A SMALL CABINET SHOP SERVING THE LOCAL MARKET, AND TODAY IS A FULLY INTEGRATED MANUFACTURER. CRESTWOOD CURRENTLY CONSISTS OF A 300,00 SQUARE FOOT STATE OF THE ART PRODUCTION FACILITY, WHICH ACCOMMODATES ALMOST 200 SKILLED EMPLOYEES, CREATING ONE OF THE COUNTRY'S MOST MODERN WOODWORKING FACILITIES.

CRESTWOOD BUILDS CABINETS THAT REPRESENT THE HIGHEST STANDARDS OF "GREEN DESIGN", ACHIEVING BEAUTIFUL FINISHES WITHOUT COMPROMISING THE AIR QUALITY OF YOUR HOME, AND USING ONLY LOW-EMITTING ADHESIVES AND SEALANTS, PAINTS AND COATINGS, AND "GREEN" WOODS.





Crestwood, Inc.
601 E. Water Well Rd. Salina, Kansas 67401
800.235.2618 785.827.0317
www.crestwood-inc.com